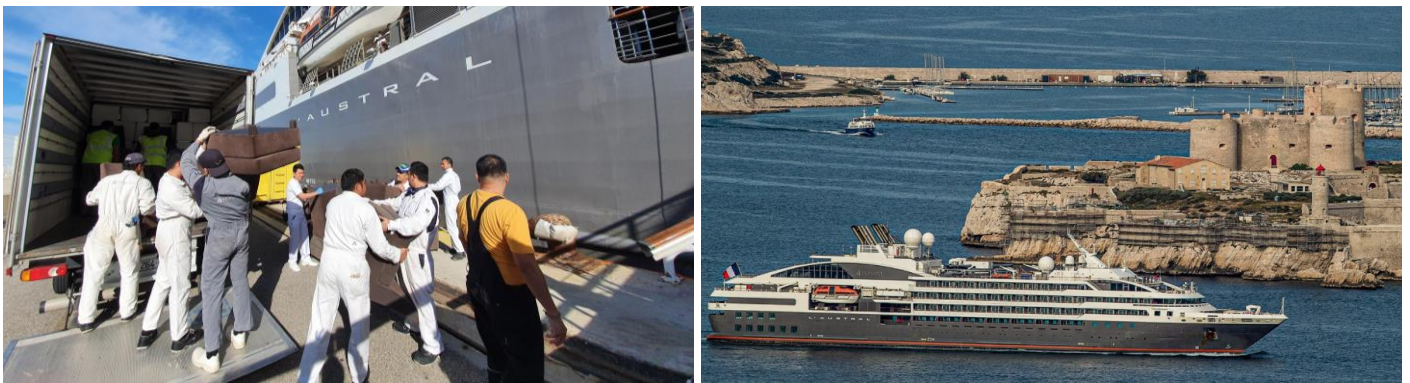


PONANT continues its action in favour of the most disadvantaged and donates furniture to the association Régie Service 13



In collaboration with the Marseille Provence Cruise Club, the Port of Marseilles Fos and the customs authorities, the cruise company PONANT has donated furniture from its ships currently in technical stopover in the Port of Marseilles to the benefit of the local charity Régie Service 13 on 9th June.

Régie Service 13 was thus able to receive nearly 150 m³ of furniture (tables, chairs, armchairs...) as part of its actions in favour of social and solidarity development.

This operation follows a previous collaboration last May. PONANT had already donated the food surpluses from its 3 ships docked in Marseilles to the local food bank, *Banque Alimentaire*, which feeds nearly 100,000 people every year. In strict compliance with hygiene and safety protocols, more than two tons of food had been distributed free of charge.

"PONANT, the only cruise company in Marseilles, has trusted us to dock its ships in Marseilles. It is an honour for the entire port ecosystem and we are delighted with this decision. I salute the company's two initiatives, first last May when several tons of food from the three ships in port were donated free of charge, and then today with the donation of the furniture on board L'Austral, to local charities working for the most disadvantaged, who are even more vulnerable at this unprecedented time. I am deeply touched by the logistics implemented by the company in perfect cooperation with the Marseille Provence Cruise Club, as well as the port services and local authorities to enable this type of charitable operation to make sense. Solidarity and mutual aid are the very essence of the cruise and maritime industry." says Jean-François Suhas, President of the Marseille Provence Cruise Club.

"Beyond the responsible exercise of our profession and our commitment to promote sustainable tourism, we believe that it is now more than ever our duty to develop solidarity actions in favour of the most vulnerable populations. We are pleased to collaborate with the Marseille Provence Cruise Club and also thank the port of Marseilles Fos and the customs authorities for having allowed the implementation of these wonderful mutual aid operations." says Jean Emmanuel Sauvé, President of PONANT.

ABOUT MARSEILLE PROVENCE CRUISE CLUB

Founded in 1996 by the Marseilles Provence Chamber of Commerce and Industry, the City of Marseilles and the Port of Marseilles Fos, the Marseille Provence Cruise Club brings together the entire economic and institutional sector of Marseilles involved in the development and promotion of cruises locally. It is a unifying player and initiator of a dynamic promotional approach for the Marseilles Provence territory, as well as a counter for all professionals in the sector and a mediation interface. The association is also very involved in promoting and encouraging the eco-energetic transition of cruise ships within the region.

ABOUT REGIE SERVICE 13

Since its creation in 1989, the "Régie Service 13" association is a tool of social and fair development, serving humankind, on Marseilles territory. The structure proposes professional integration through economic activity, living conditions improvement's actions (cleaning, green spaces, etc.) and mediation missions.

ABOUT PONANT

Established in 1988 by Jean Emmanuel Sauvée and a dozen officers from the French Merchant Navy, PONANT has led the way with a new style of luxury cruising through a unique concept of sea travel which combines exceptional itineraries and sustainable tourism with luxury hotel services aboard smaller-scale ships.

The small size of its vessels, the medical infrastructure and teams on board, its protocols and the professionalism of its crews ensured that there were no cases of Covid-19 contamination throughout the PONANT's fleet. To prepare for the resumption of its activity, PONANT is collaborating with the IHU (Institut Hospitalo-Universitaire) Méditerranée Infection of Marseilles, one of the World's leading centers in the field of infectious diseases, as well as with the Battalion of Marine Firemen of Marseilles. The "Covid-Safe" protocol developed by PONANT is based on health standards that exceed international regulations.

For more information, visit www.ponant.com

Contacts

FOR PONANT | Laure Foulatier | presse@ponant.com | +33(0)4 88 66 64 38



FOR MARSEILLE PROVENCE CRUISE CLUB | Elsa Basset | ebasset@marseille-cruise.com | +33 (0)4 91 39 33 98



#PONANT / #PONANTMOMENT

© Photo credits: PONANT / Wassim Daoud - Gilles Martin-Raget